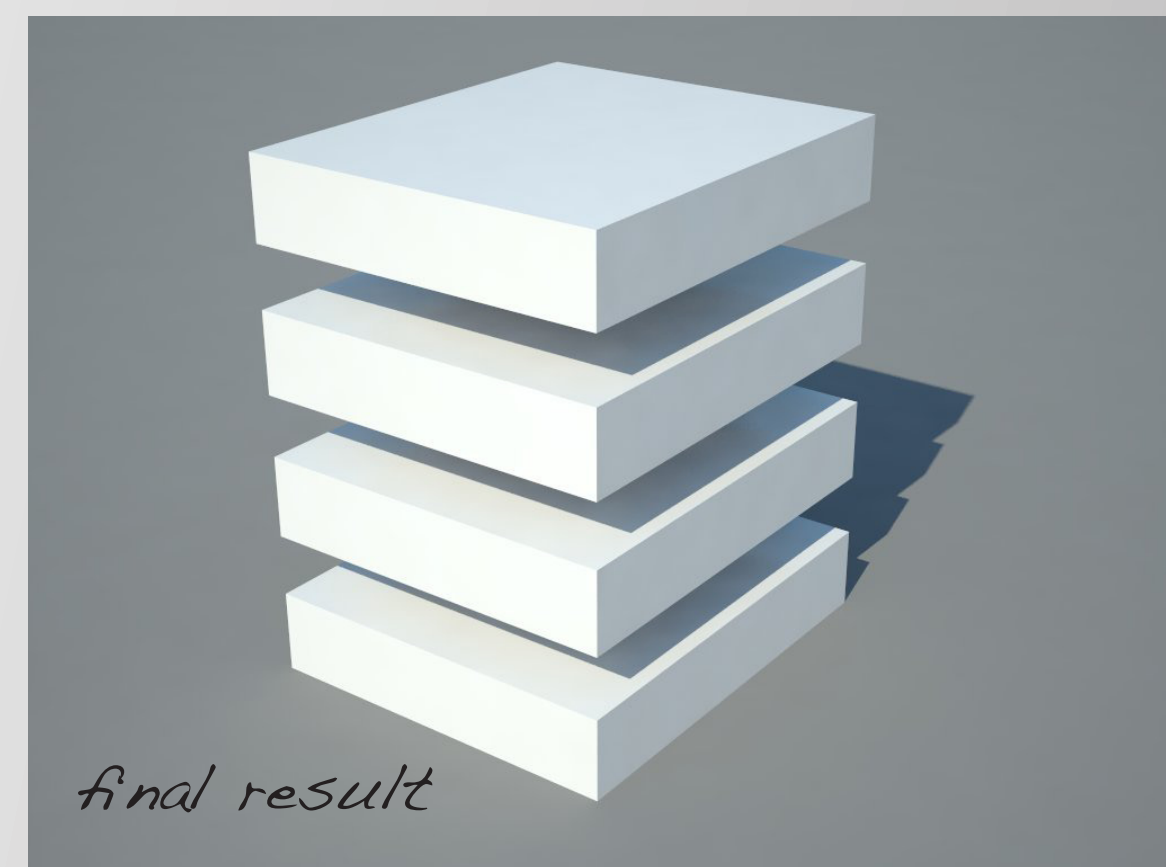
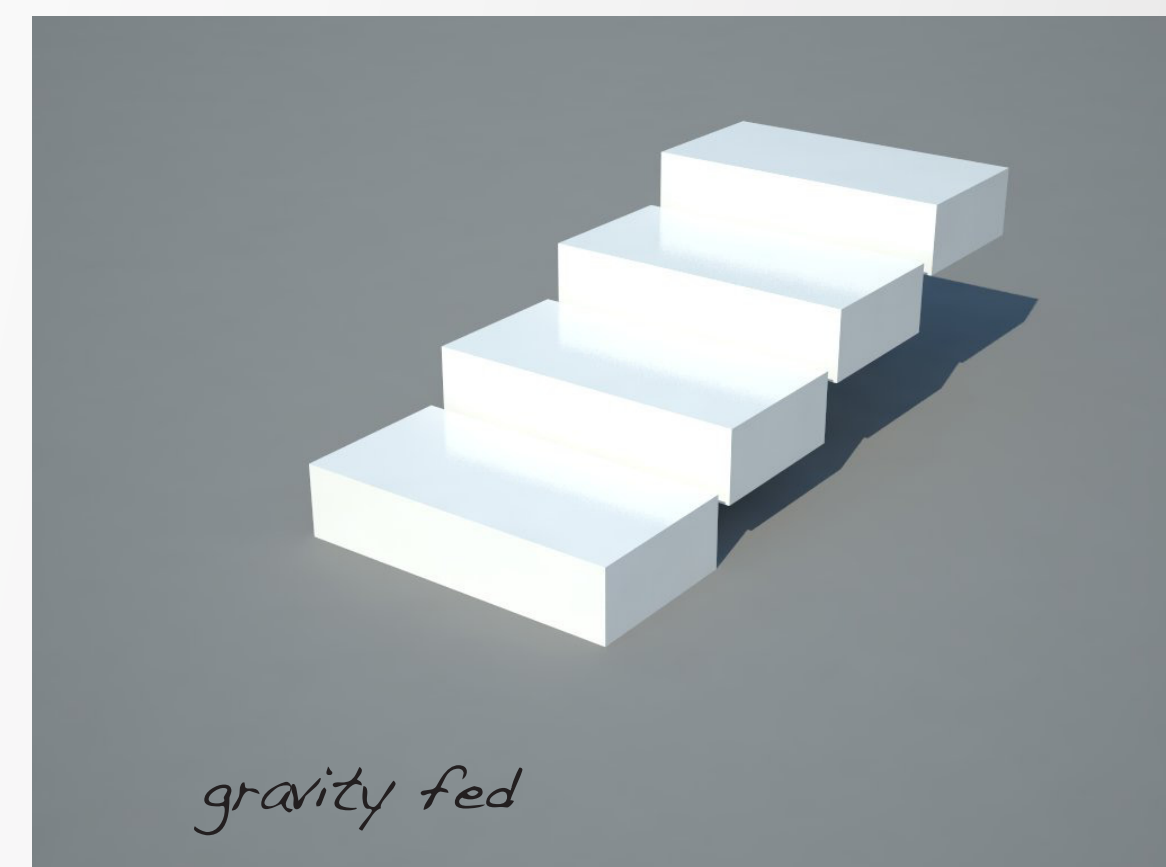
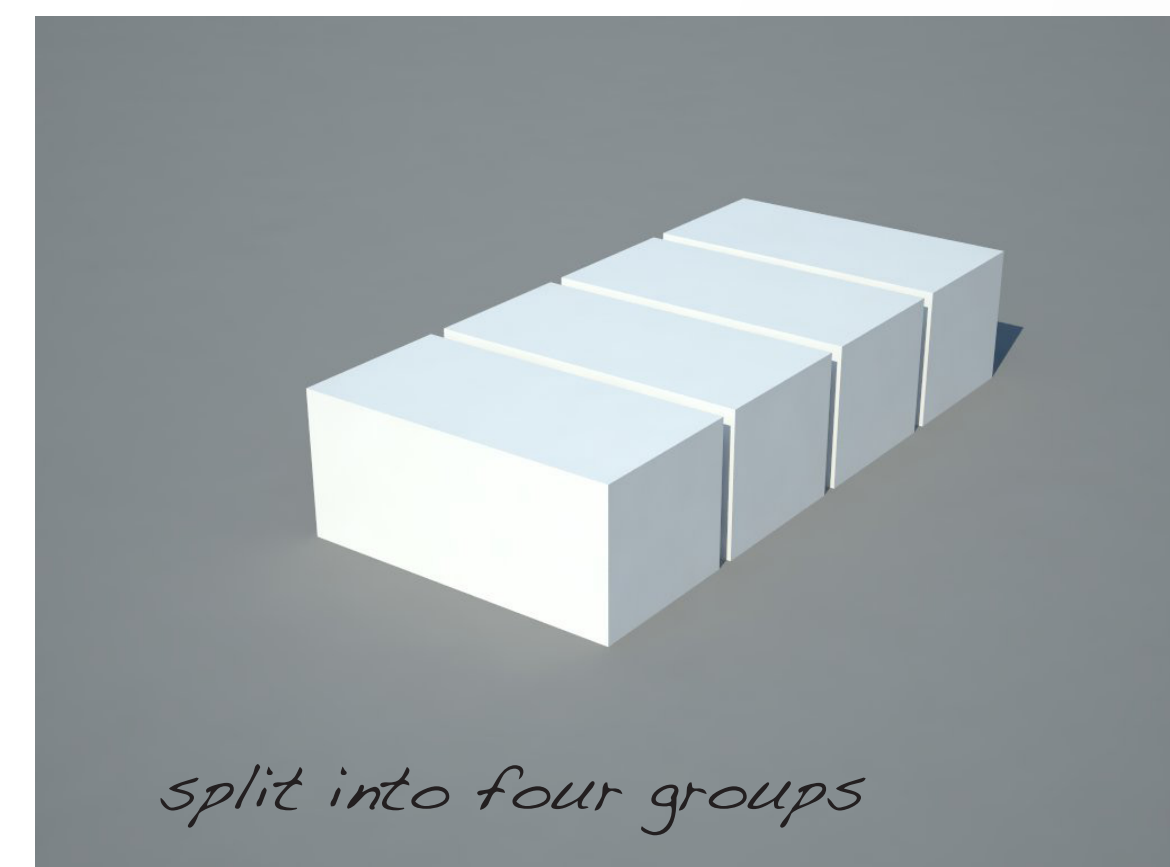
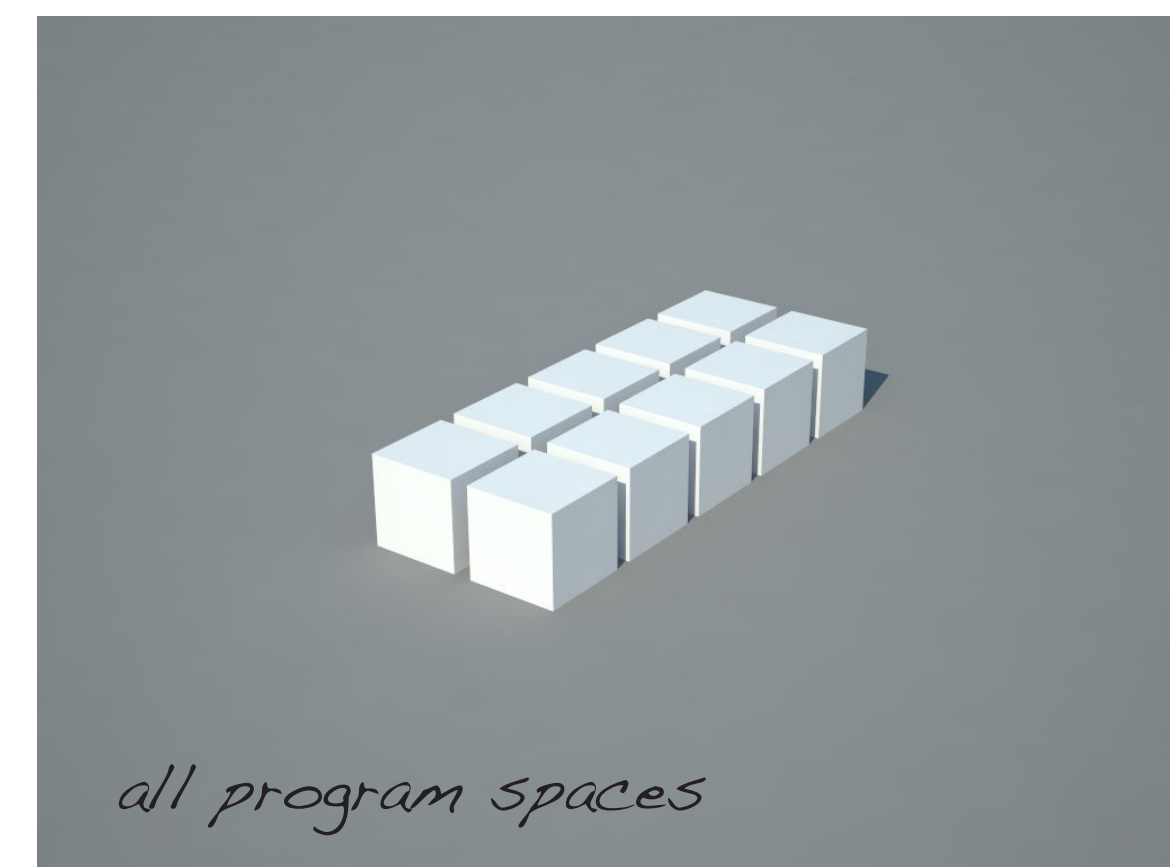
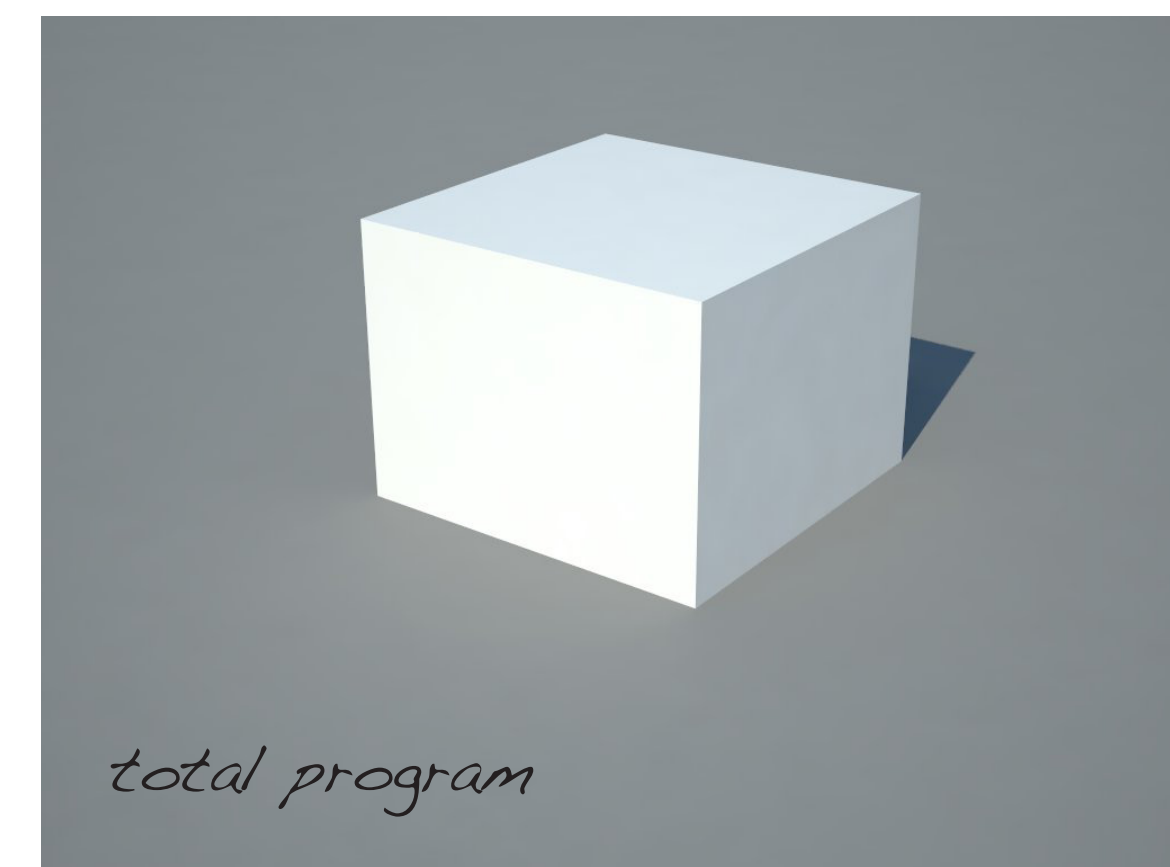


Winestudio

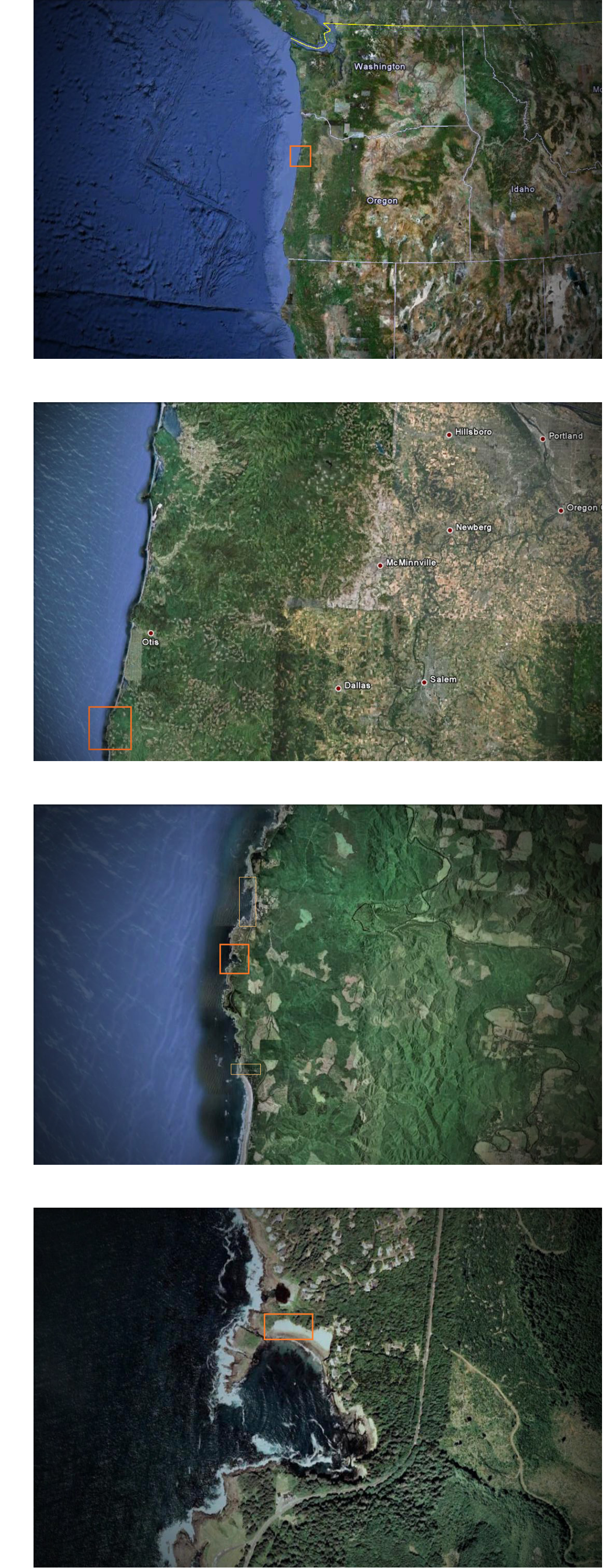
program



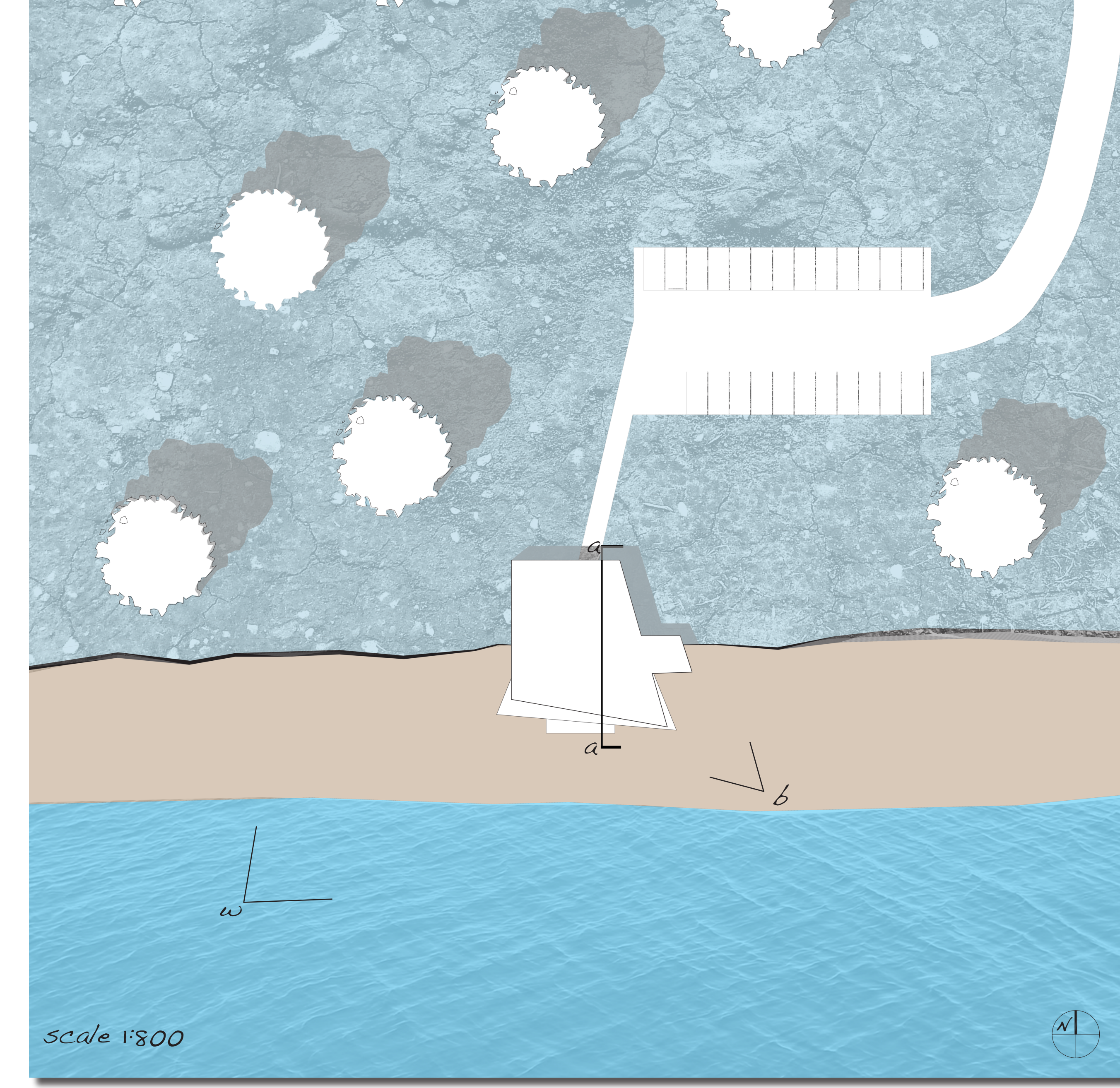
from the Grape to the Bottle

Evan Koehler
Arch527
Lance Walters

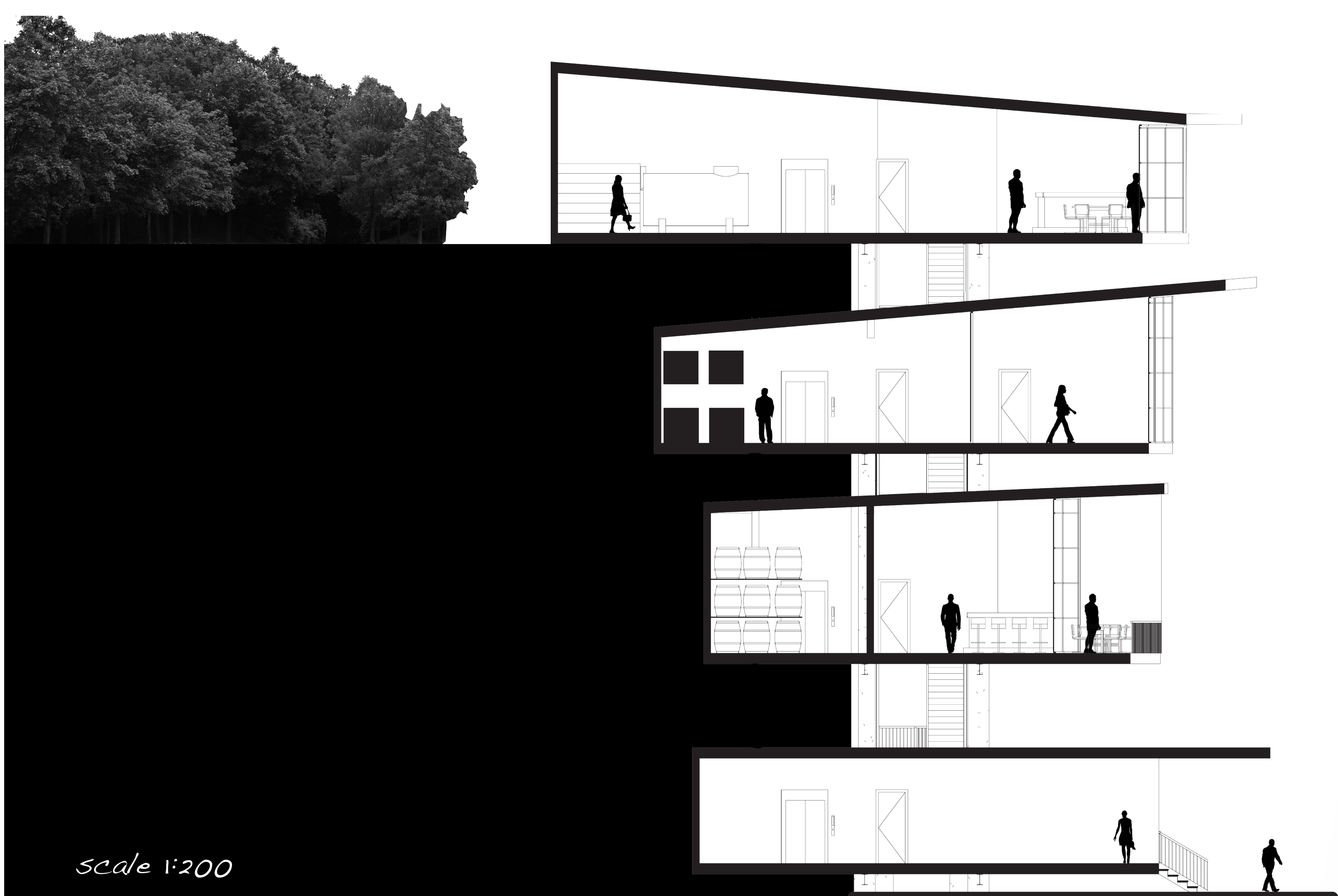
whale cove location



site plan

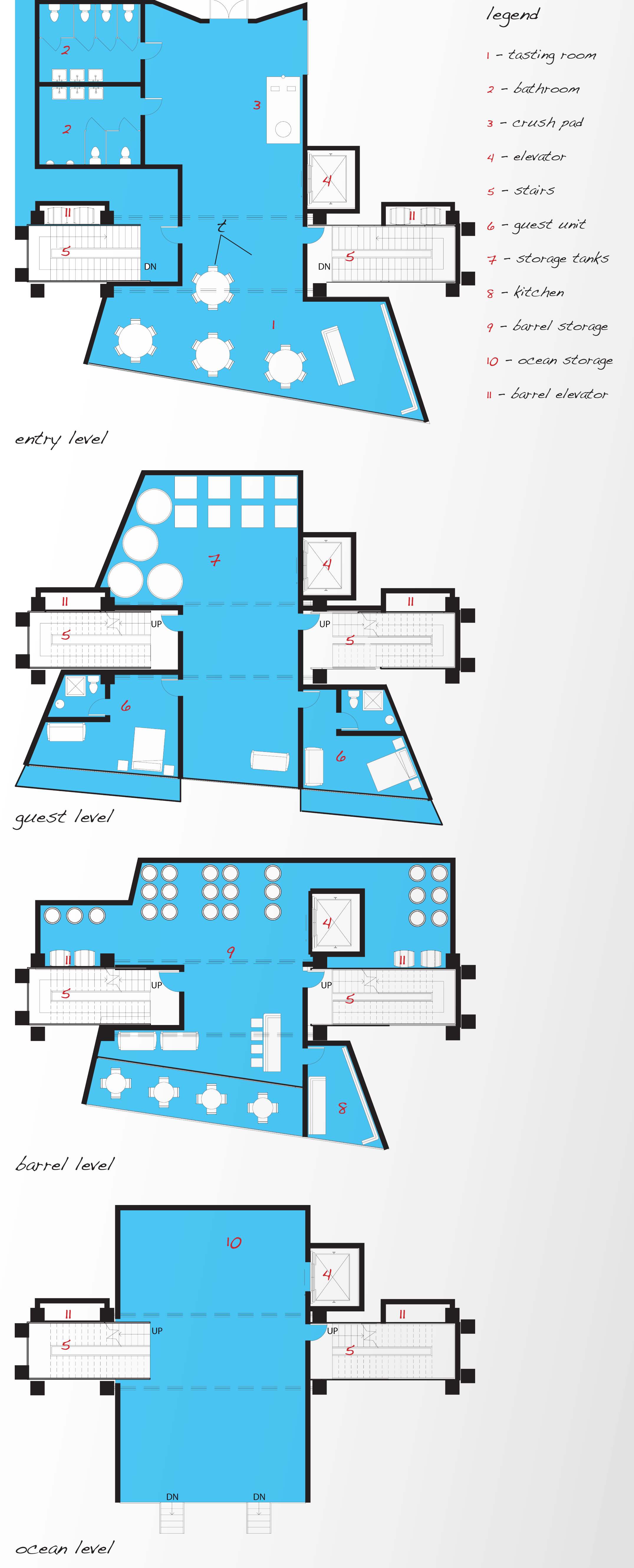


section a

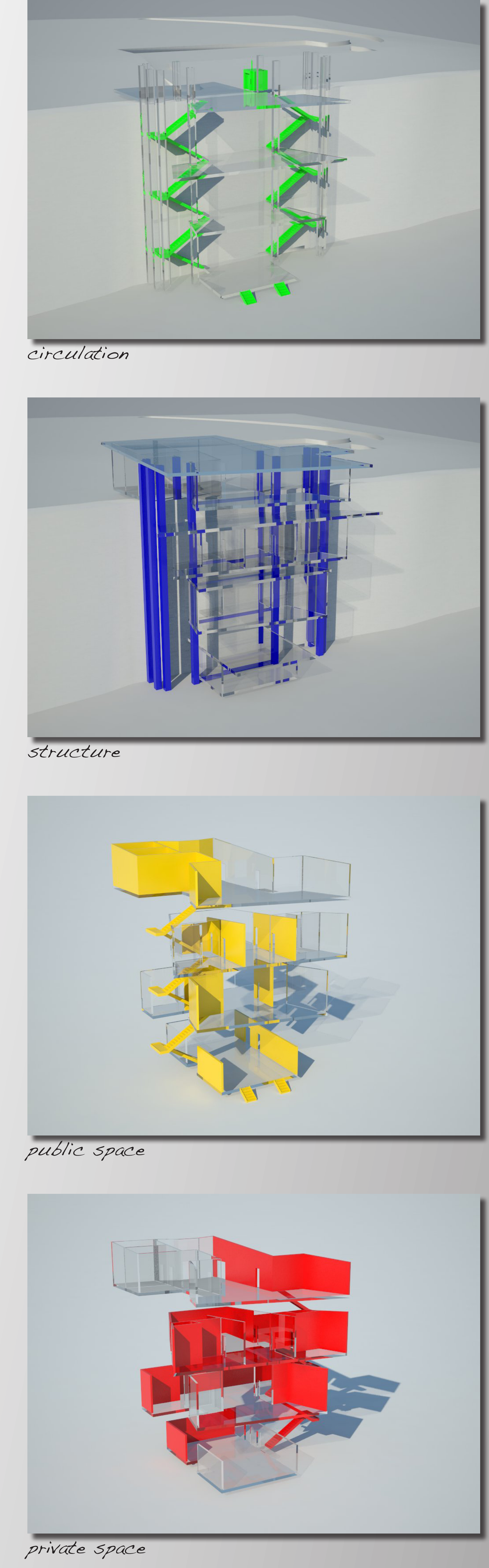


studio brief
While initial investigations will largely determine the program, from the client it is assumed the winery will have longevity, and is to be built with durability.
The second design will be more traditionally architectural- the design of a building or collection thereof. Position, intent and desire developed in Project 1 will directly feed Project 2. It is considered an extension of the design exploration rather than a separate, culminating, presentation of your work.
Client assumptions: Owns and operates a nearby boutique winery that is/will remain independent the new winery. Has begun exploring proposals regarding the marketing/operational/programming strategies. Is open to alterations/explorations of wine making processes.
Looking at the wine making process lead me to investigate gravity fed wine production facilities. I felt that this gravity fed system related directly to project 1. The extension of project 1 into project 2 helped split the program into four parts and move it to a vertical position.

floor plans



diagramming



renderings

